

Did You Know...?

- Only 3% of the water on earth is drinkable.
- Less than one gallon of gasoline can pollute one million gallons of water.
- **You** can **avoid** contaminating your source of drinking water by properly disposing of chemicals that have the potential to cause ground water contamination.
- The following chemicals are common ground water contaminants:
 - Cleaning Products
 - Automotive Products
 - Fuel Oil
 - Furniture Strippers
 - Lawn & Garden Products
 - Oil based paints
- Improper disposal methods include:
 - pouring chemicals on the ground,
 - pouring chemicals down a sink or toilet connected to a septic system,
 - pouring wastes down a storm drain because many storm drains lead directly into the ground or to a nearby stream

Contacts

At The Ohio Environmental Protection Agency

Ohio Environmental Protection Agency
Lazarus Government Center
P.O. Box 1049
Columbus, Ohio 43215-1049
www.epa.state.oh.us

For questions concerning Drinking Water Protection, contact:

The Division of Drinking and Ground Waters

Phone: (614) 644-2752

The Office of Pollution Prevention

Phone: (614) 644-3469



Community Awareness

Announcement Village of Lodi, Ohio

Where does Lodi's drinking water come from?

Lodi's drinking water is pumped out of the ground by wells located water treatment plant site off Swamp Rd. This ground water is pumped to the water treatment plant where it is filtered and softened prior to having Chlorine added to kill harmful bacteria in it. From there, it is pumped through an underground network of pipes to Lodi's homes and businesses.

Where does the ground water come from?

All ground water originally comes from rain or melted snow that has seeped into the ground. Water fills spaces between sand and gravel, as well as fractures in rocks. Where underground water is abundant enough to provide an adequate source of drinking water, the water-rich sediments or rocks are called an aquifer. Lodi's drinking water supply comes from a sand and gravel aquifer.

Ground water does not stay in one place. The ground water supplying Lodi's wells is unique in that it comes from a location on the boundary of the Ohio River Basin Watershed. All water taken from this side of the watershed must be returned to the Great Lakes. Water flows very slowly from west to east. This means that if pollutants are spilled on the ground anywhere near the wells, or west of the wells, they may eventually enter the ground water that you are drinking. And although the water treatment plant removes bacteria, it would be very expensive to purchase treatment systems for every type of possible pollutant. This is why everyone in the Village of

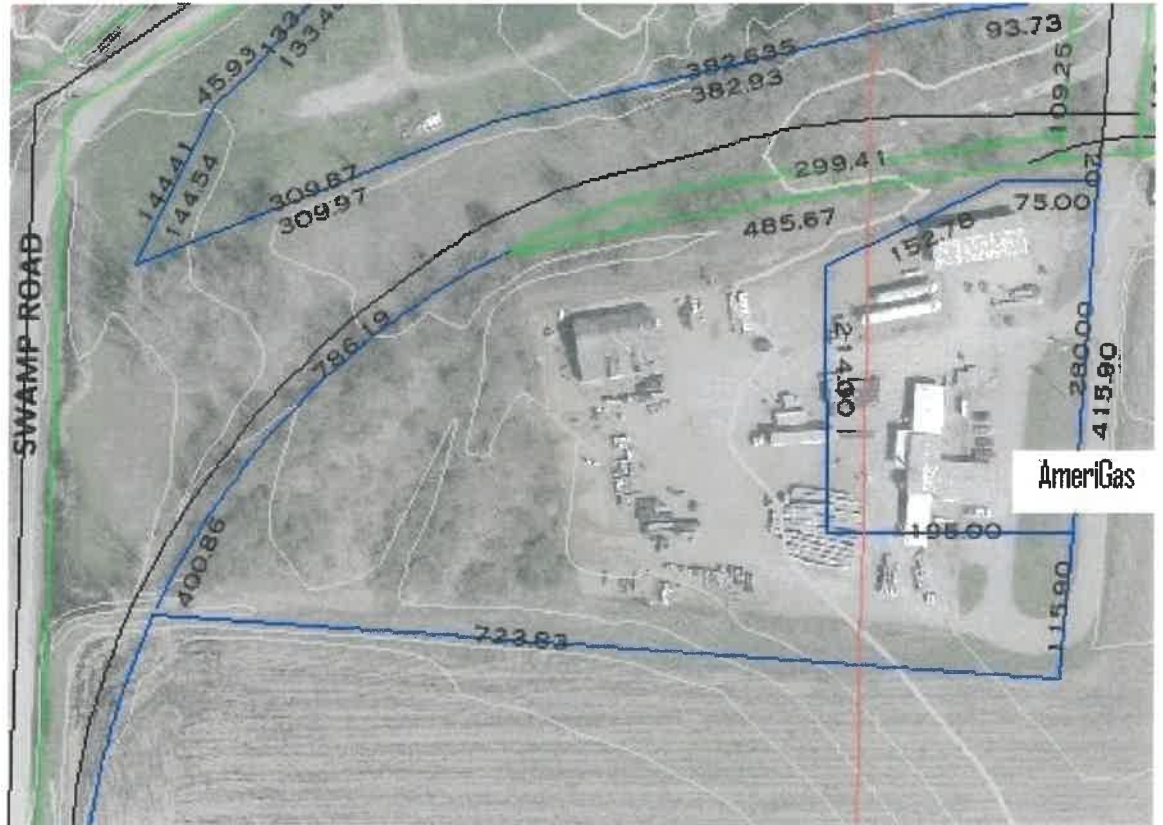
Announcement Cont:
Village of Lodi, Ohio

Lodi should know about **Drinking Water Source Protection**.

What is Drinking Water Source Protection?
Drinking Water Source Protection is a plan of action for protecting the water you drink from contamination at the source.

To assist Lodi with our drinking water source protection efforts, Ohio EPA provided the village with a Drinking Water Source Assessment report. This report included a map of the protection area (see above), based on calculations of how far water travels through the aquifer in five years. The report also includes information on land uses and facilities that may pose a contamination risk to the drinking water source. Potential risks are based on proximity to the drinking water source and the kinds/quantities of chemicals that are typically handled by these types of facilities. The Village of Lodi has used the provided assessment to develop a drinking water source protection plan. If you would like to be more involved with the village's drinking water protection efforts or if you would like to see a copy of the city's drinking water source protection plan, please contact Lodi's Superintendent of Utilities at (330) 948 2892.

Most importantly, if you live or work within the Village of Lodi's drinking water protection area please pay attention to the "**Did You Know...?**" portion of this brochure.



Contact Information:

1. *For questions concerning the Village of Lodi's Water Supply.*
2. *For questions concerning the Village of Lodi's Drinking Water Source Protection Area.*

Village Superintendent's Office
Phone: (330) 948 2892